



Augmented human intelligence to drive actionable safety insights

Jye Yng Voon

TNChE Asia 2023 - CPSS

22 June, 2023

© Copyright 2023 by ERM Worldwide Group Limited and/or its affiliates ('ERM'). All Rights Reserved. No part of this work may be reproduced or transmitted in any form or by any means, without prior written permission of ERM.

The business of sustainability



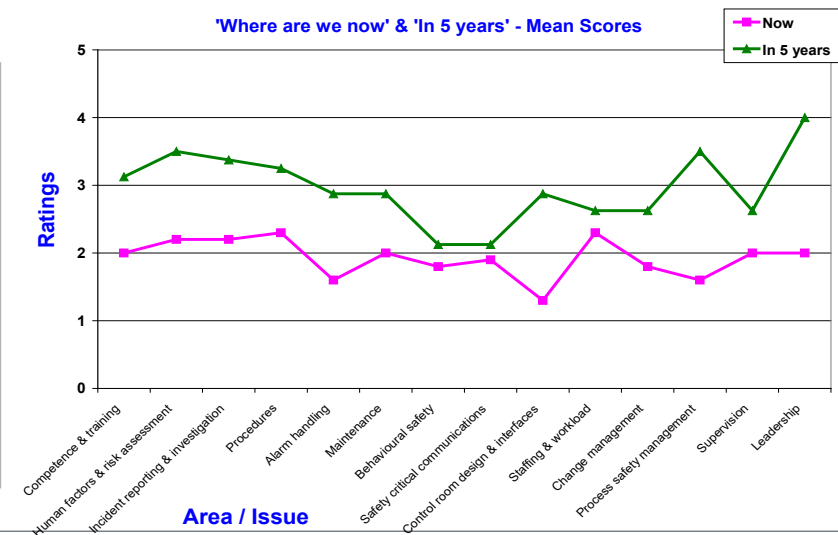
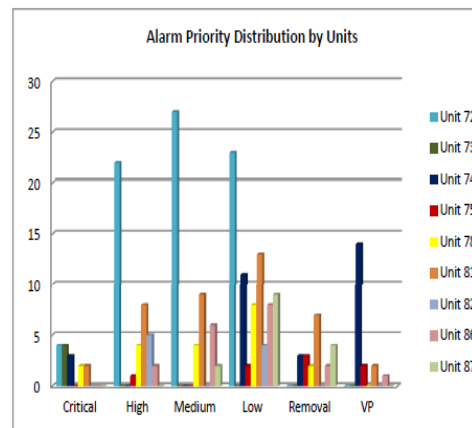
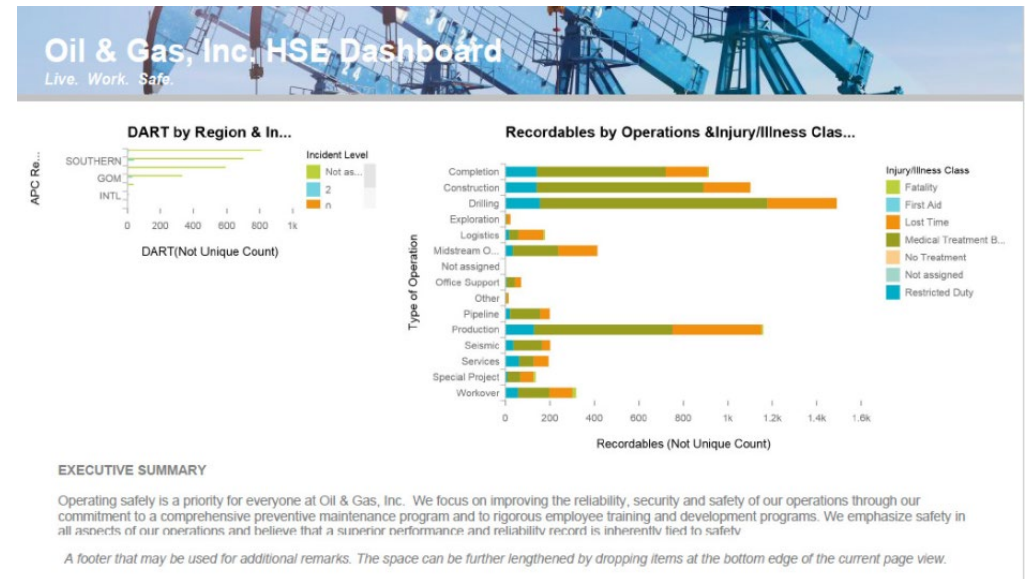
Outline for this presentation

- **Data Analytics & Maturity Framework**
- **Digital Application in Process Safety**
- **Sharing of experience – Case Studies**

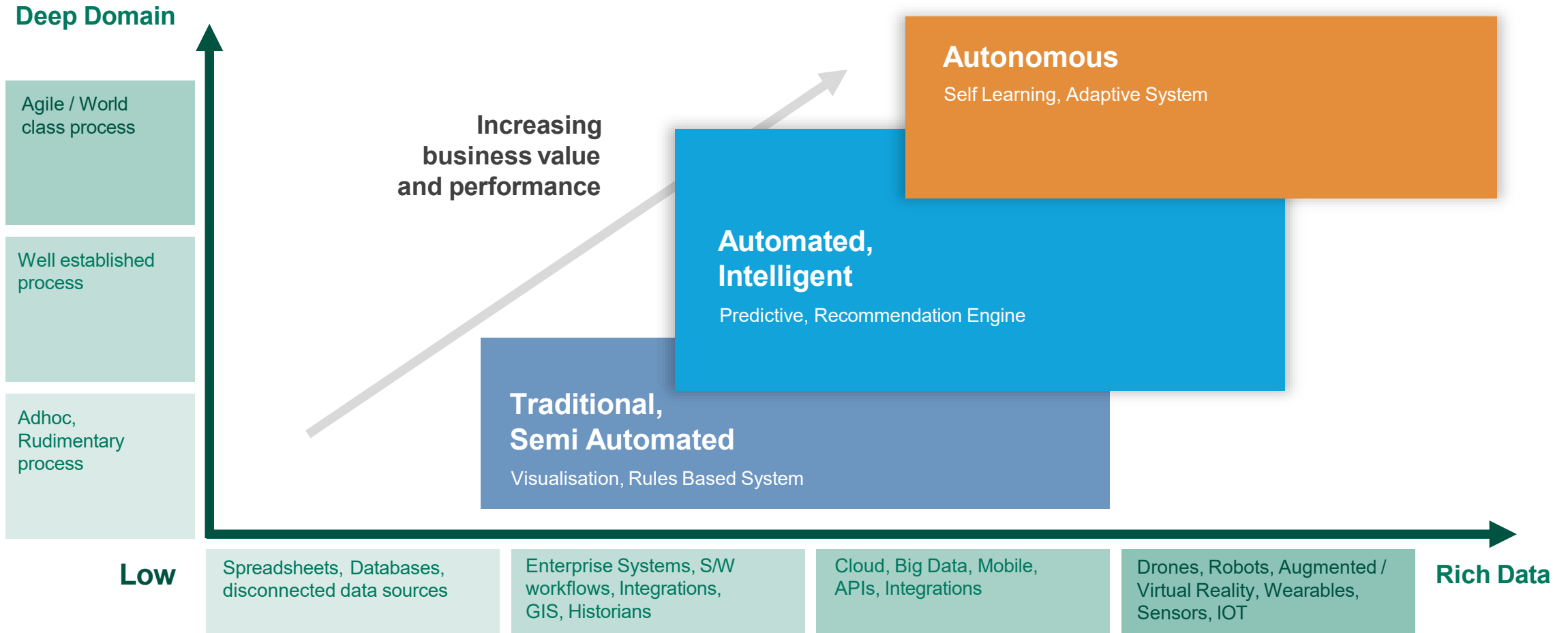


Traditional Safety Data & Analysis

- Lagging Indicator Analysis
 - Leak data
 - Near misses
 - Injury data
 - Fatality data
- Basis for risk assessments
- Goal Setting

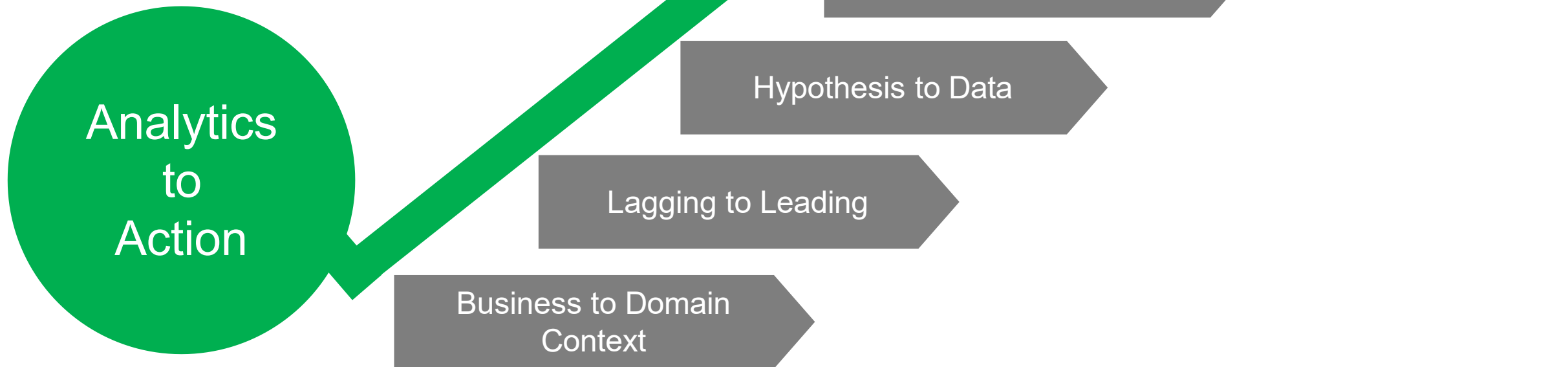


Analytics maturity framework – Augmenting Intelligence



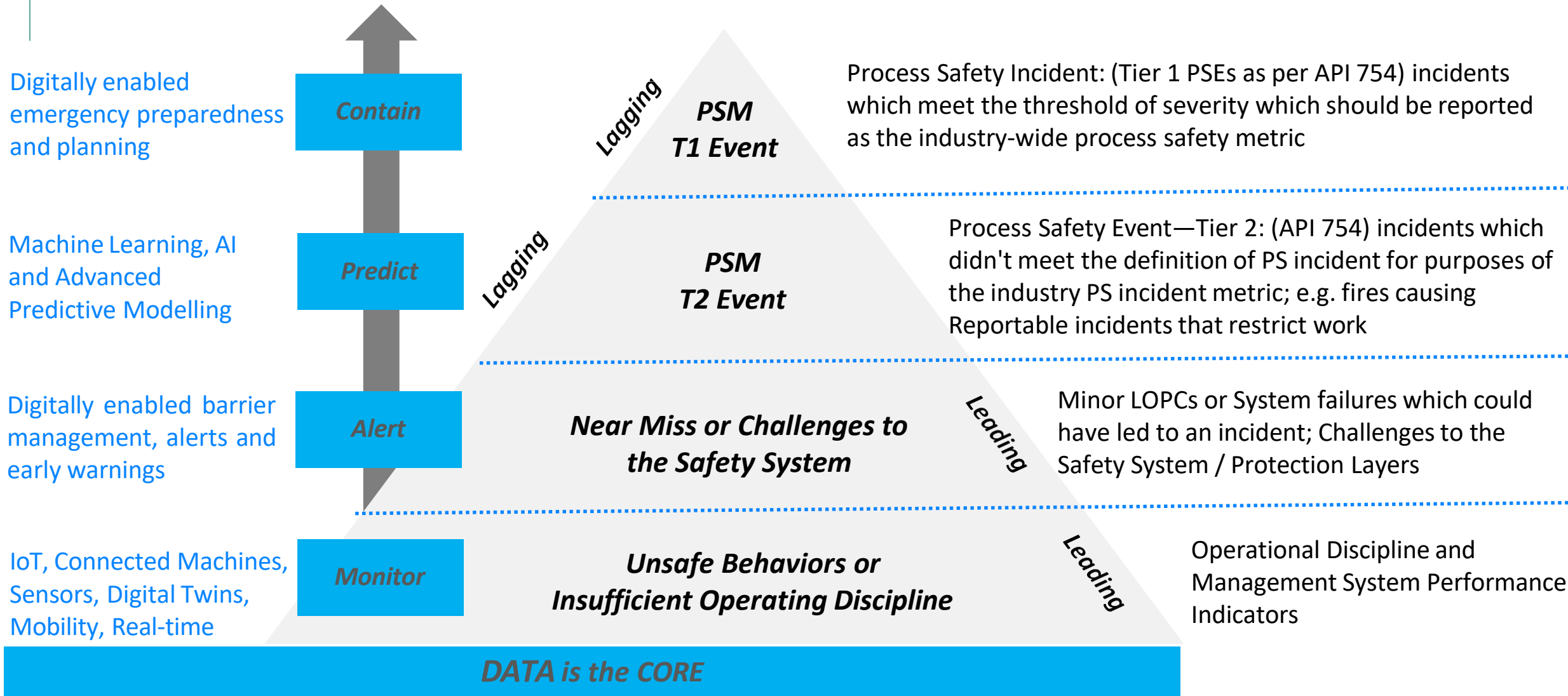
Analytics to Action Framework

Our **Analytics to Action** framework comprises of a 6-Step process for solving business challenges using data analytics and insights



Digital Process Safety Pyramid

Intervention Levels



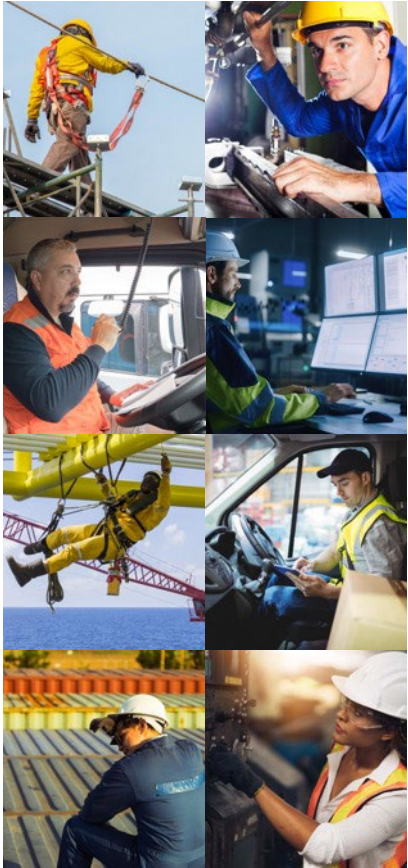
Look at some examples and case studies....





Connected Safety

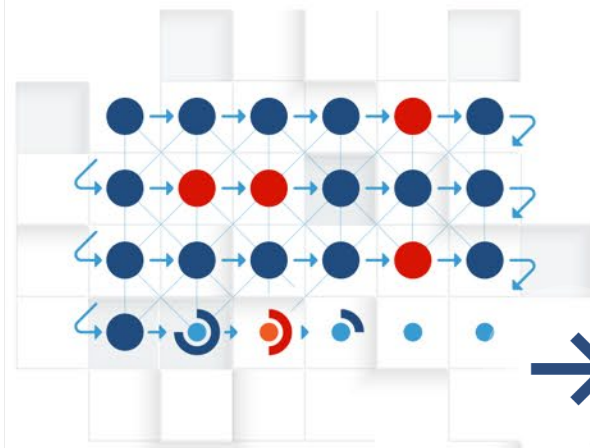
Augmenting human intelligence to drive actionable safety insights



Multi-layered datasets



Safety Algorithms



High fidelity data sets
Legacy disparate data sets

Analogue and digital safety and non-safety data are processed by advanced safety algorithms to identify emerging risk patterns specific to your business.

Actionable insights

Workplace SafeT

Road SafeT

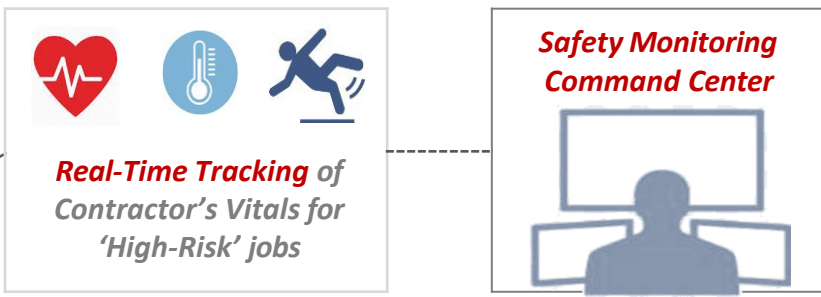
Process SafeT

Feedback to drive operational excellence and safety performance

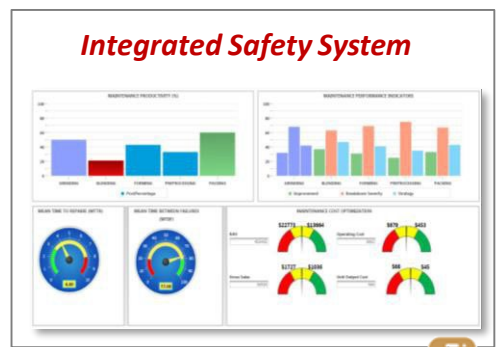
Use Case: Connected Safety

making safety smarter, agile & pro-active with data....

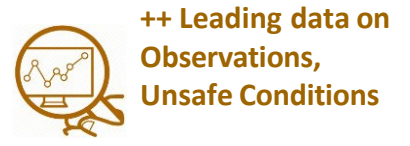
A Leading Safety



B Lagging Safety

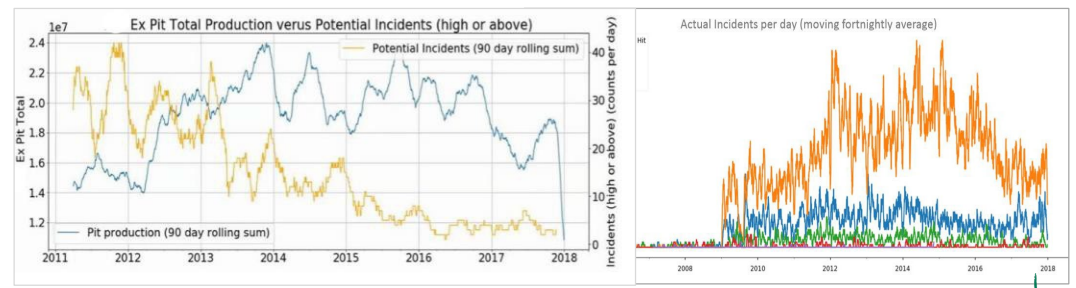


Operational integrated with mobility



C Connected Safety

Safety Insights, Predictive Models, Pro-active Decision Making



Helping a leading oil & gas company undergo a HSSE transformation underpinned by technology

Vision of a Next Generation Event Management System

Empowering the frontline to achieve Goal Zero with an easy to use digitally enabled end-to-end process that makes it simple to learn from events and understand our HSSE&SP performance.

- Workers easily entering incidents and accessing information of the work site.
- Improved data collection and flexible reporting tools improve our understanding of our HSSE performance.
- Process and data excellence as core foundations.
- Artificial Intelligence analyzes events, helping draw connections.
- Incident information delivered when and where its most impactful



Frontline Operator - 'I can easily and quickly record an event, even touchlessly, and learning is pushed to me when and where I need it.'

Reporting Focal Point - 'I have time to analyze what the data is telling us. I have the tools and knowledge to easily answer leaders questions on our performance.'

Asset Manager - 'Real-time reporting and high focus on collecting the right data for my asset lets me easily understand our performance.'

Business/HSSE Leader - 'I have deep understanding of our HSSE performance, with actionable insights.'

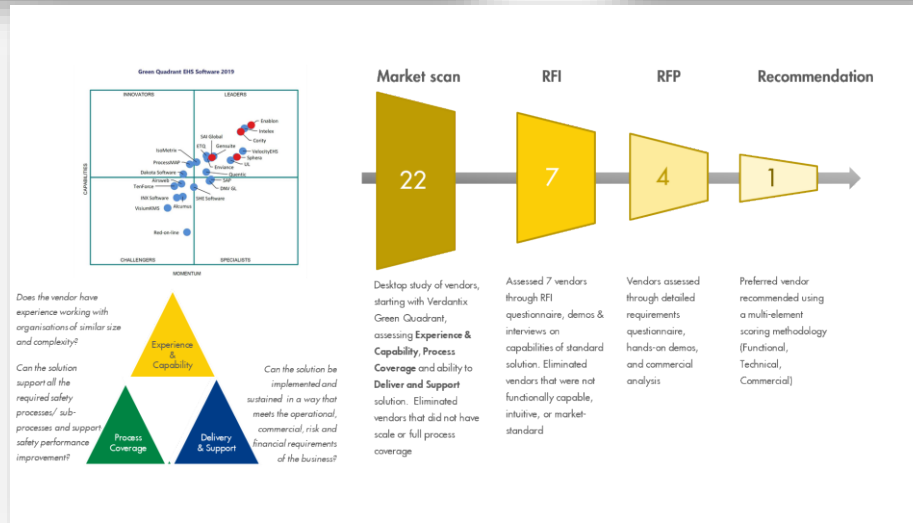
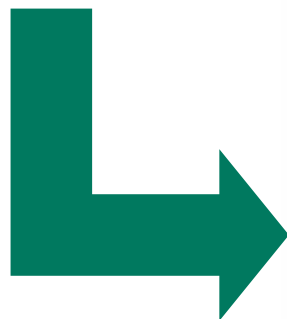


HSE Portfolio:
267 Applications



HSE Product:
Market Standard Platforms

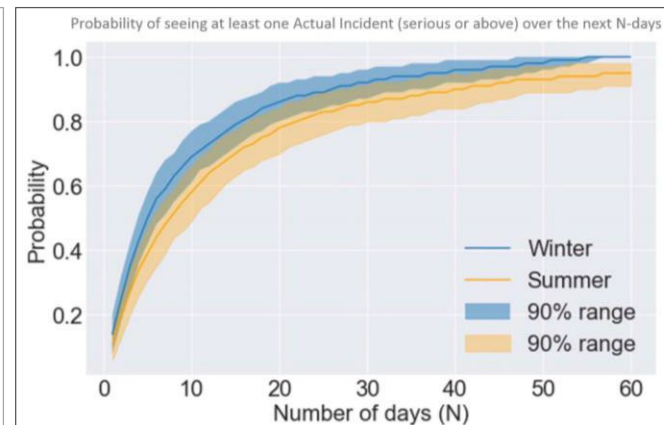
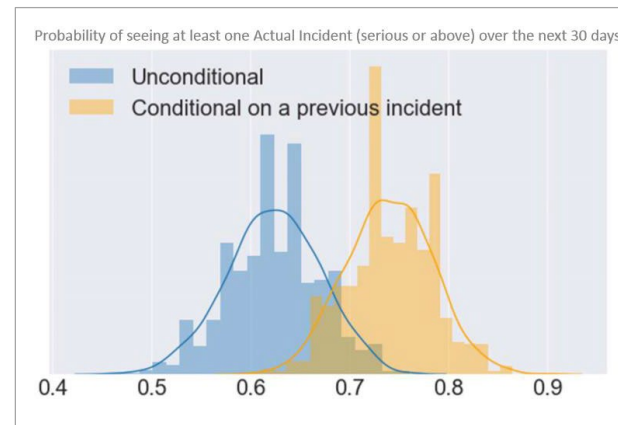
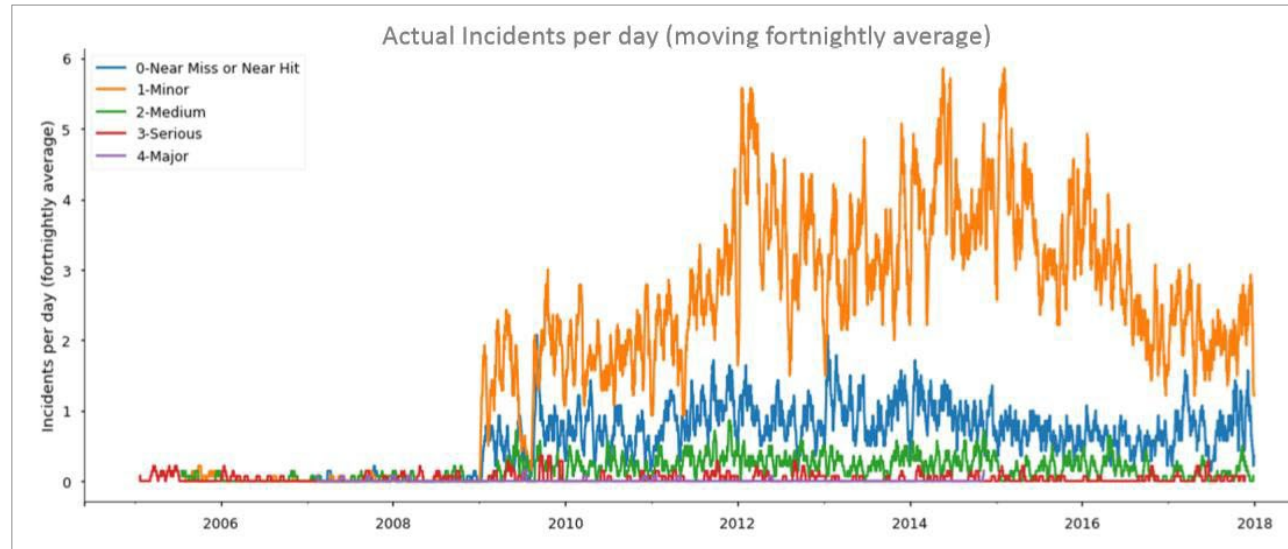
90%
Reduction in HSSE applications



\$100m
Expected savings per year with deploying one strategic platform

Predictive Analytics for Injury Prevention

Case Study Highlights



With increased number of near misses and minor incidents, our team defined advanced predictive models, **using incident data sets, combining the same with operational and weather data sets**. Our predictive models pointed out the following insights:

- Increase in injury rates during shift change over, due to SOP non-compliance; further evaluated to SOP deficiencies
- Higher probability in injury rate with associated unsafe conditions reporting, especially around confined space entry
- Increase in injury rates with changes in weather conditions, especially drop in visibility, increased wind speeds, further extended to include weather impact in site SOPs
- On a “typical” day (blue curve) there is a probability of about 62% that a severe incident (serious or above) will happen in the next 30 days
- However, If an incident has just happened (orange data), this probably rises to about 74%

Enterprise (un)safety related data resides in many systems which can be tapped to drive Safety performance

ERM's 'SafeT' algorithms leverage text analytics using machine learning to analyze safety data for further classification and action

Exploratory Data Analysis

- Apply Text Analytics techniques (word cloud, unigrams, bigrams etc.) to slice and generate preliminary insights

Classification of Records

- Automatically classifying / labelling the individual records based on a predefined set of categories (labels) to improve consistency and drive automation at scale

Rule Based Classification

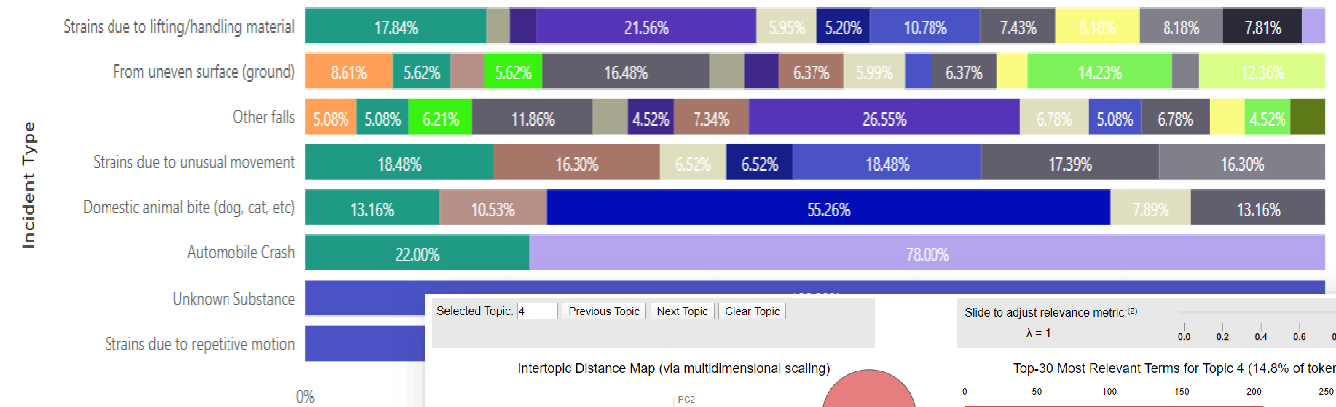
- Influence the automated classification by applying guided keywords based on advanced subject matter expertise and business needs; minimizing the need for manual intervention and review for low risk items

Topic Modelling

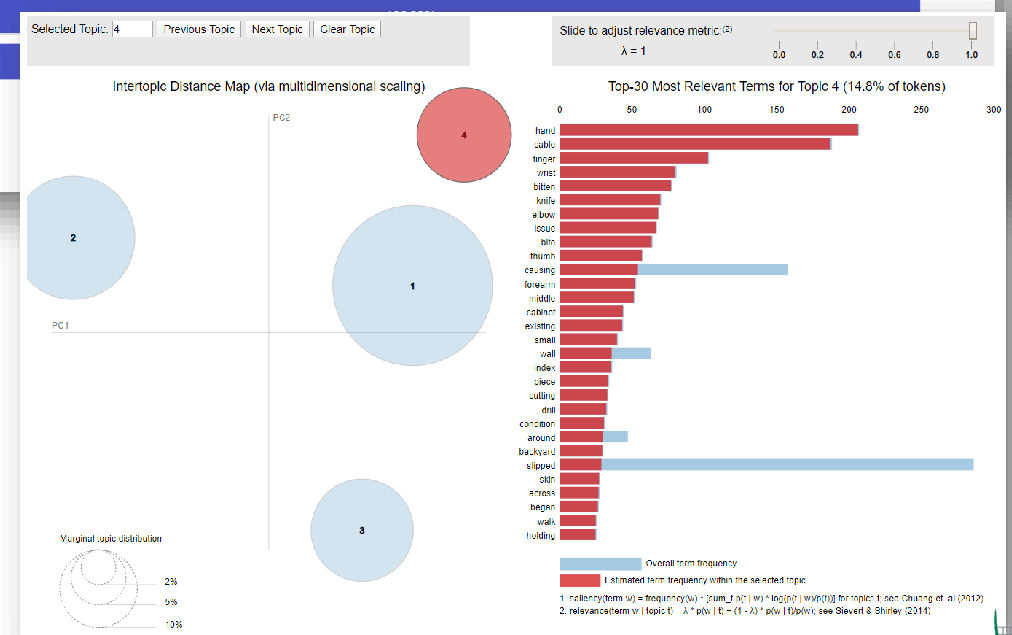
- Automatically find key themes and topics to decide what requires further validation or investigation

Key words used to describe incidents

Words: ankle back customers dog fall fell foot injured knee ladder left lower pain right shoulder slipped strain strained vehicle walking working



52%
reduction in operations costs, & improved CAPA planning





Thank you

Contact

Jye Yng Voon
jyeyng.voon@erm.com