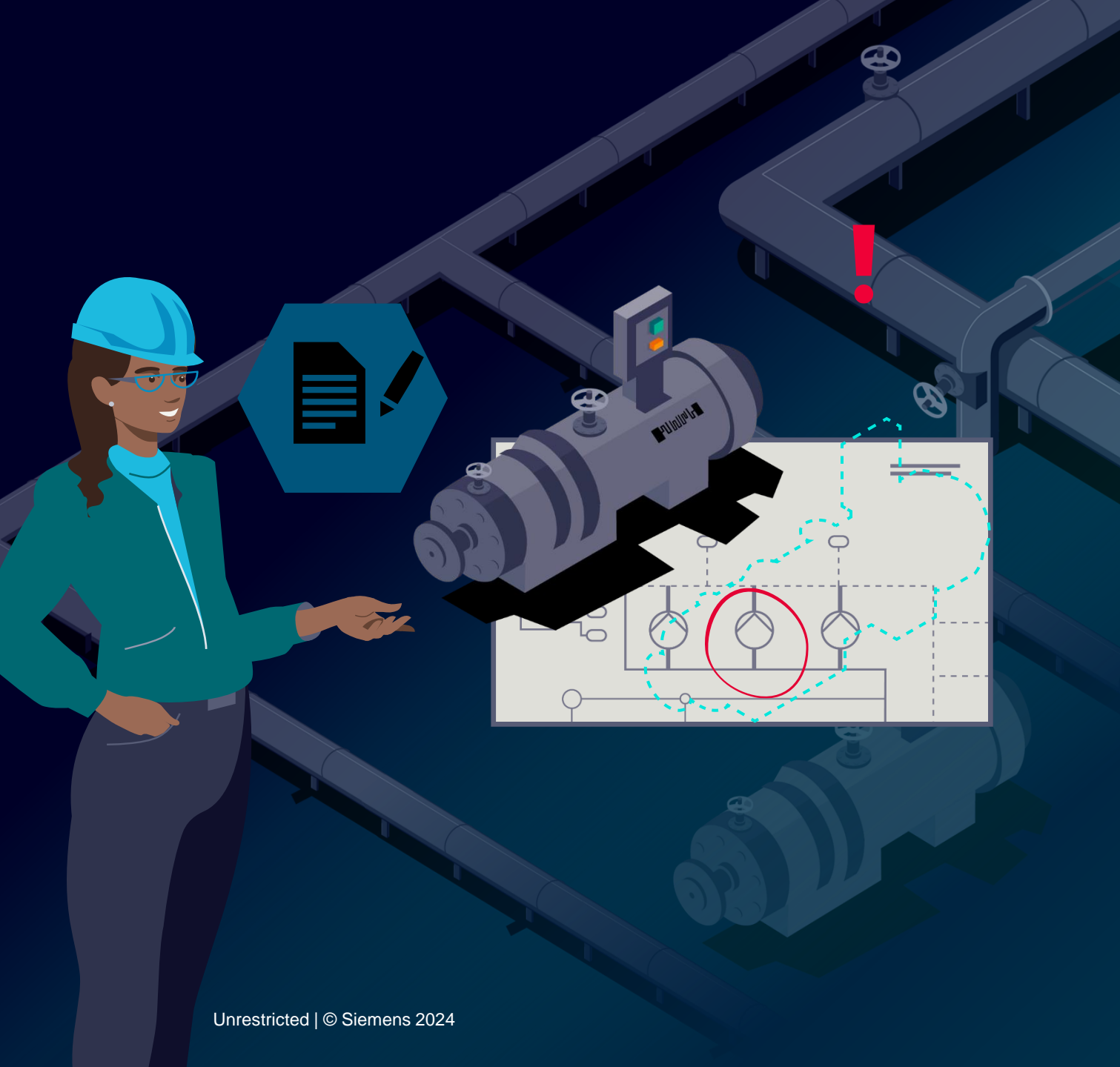




Comos Mobile Worker

Laura Fiorillo
Pre-Sales Solutions Consultant
Siemens Digital Industries Software



Key challenges of **Analogue Worker**

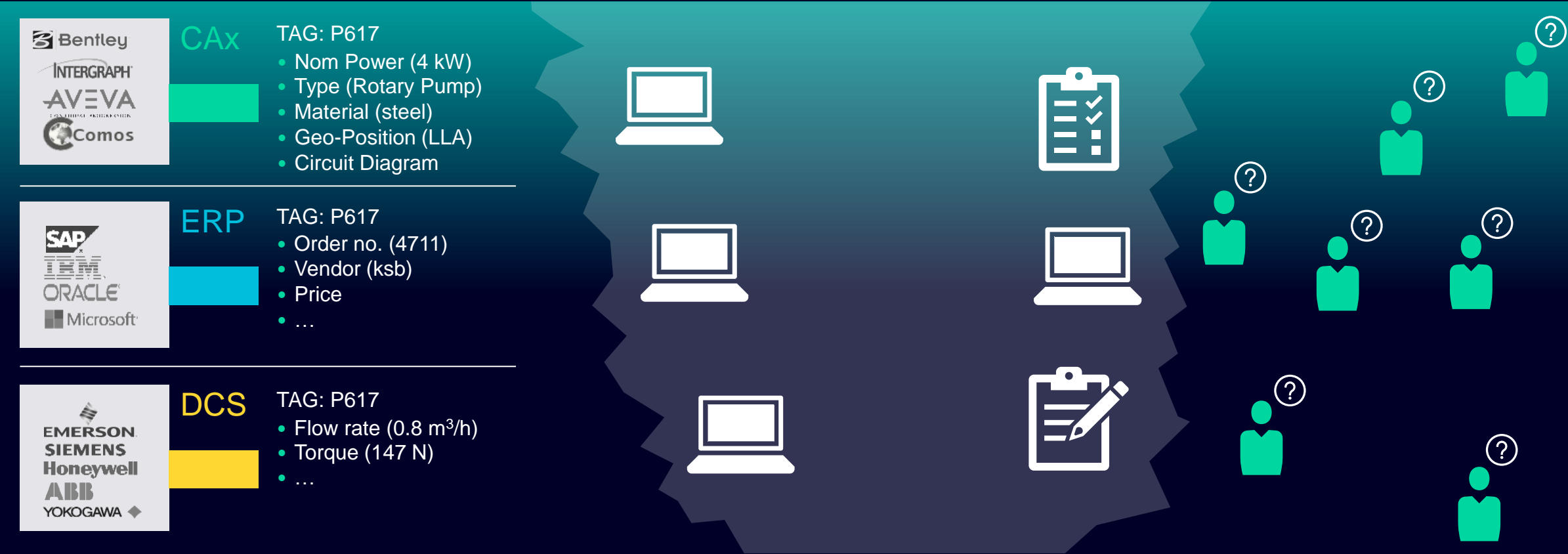
- High operations times and costs:
 - Works with pen and paper
 - Prints documents
 - Enters data manually
- Struggle to identify and locate assets quickly
- Faces higher safety risks
- Possibility to put the plant at risk
- Delays communication with other teams

COMOS Mobile Worker

Challenge: Digitize data captured in the field

Data Lake

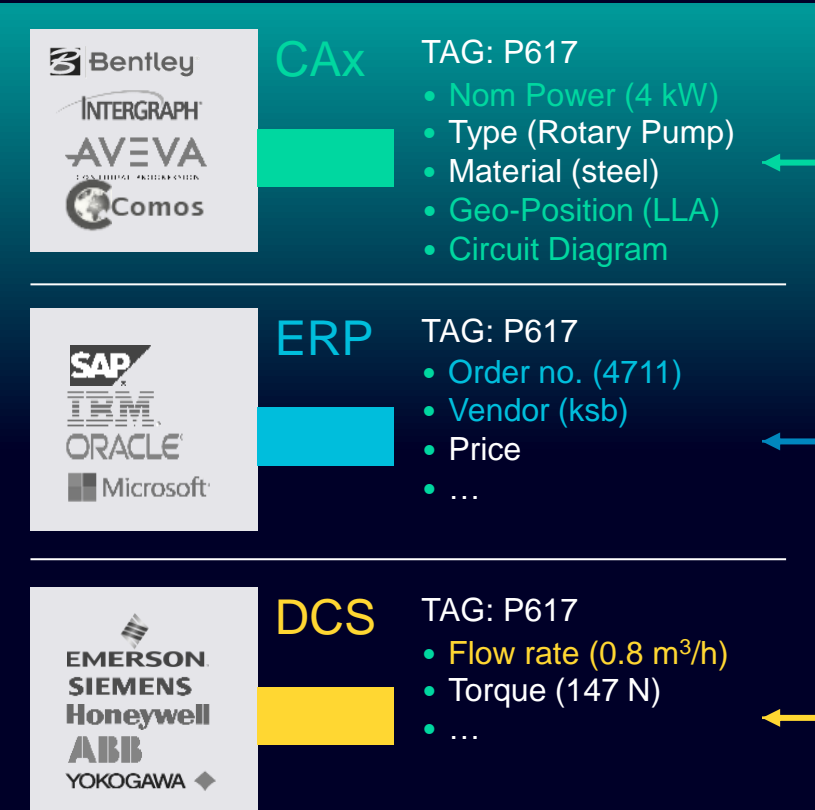
Field worker



COMOS Mobile Worker

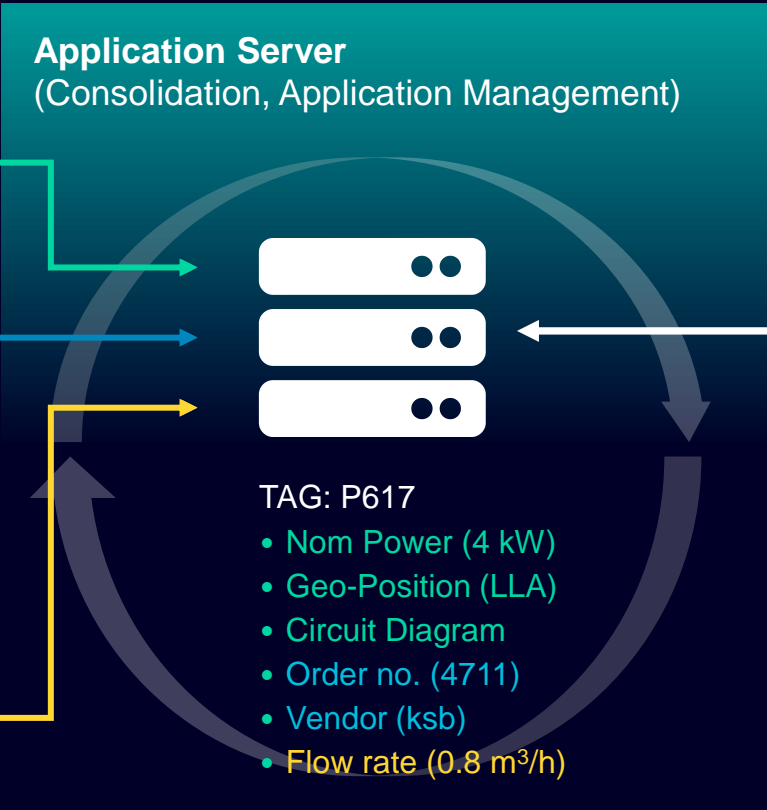
Solution: Bidirectional data flow

Data Lakes

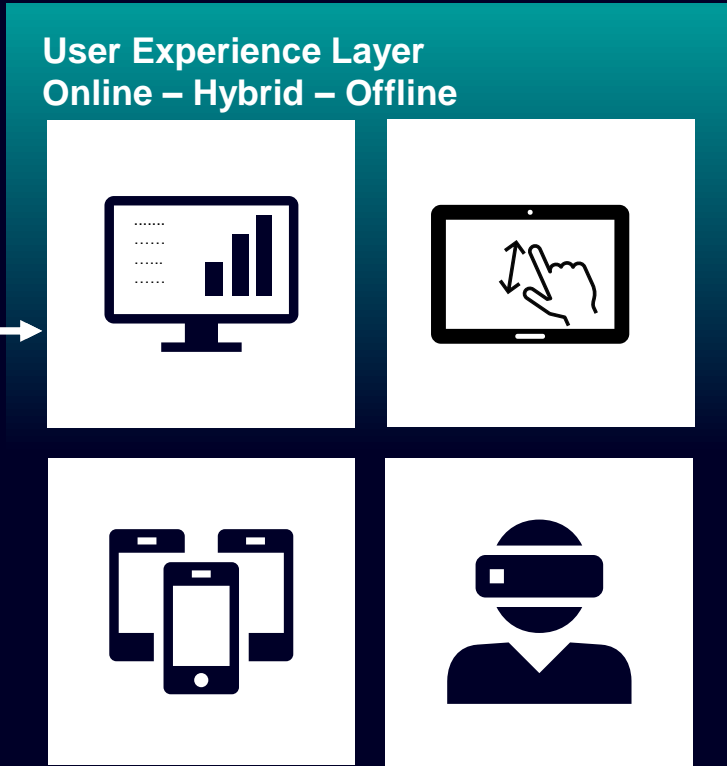


Server HW

On-premises or on Cloud



Field worker



3 Key Use Cases of the Mobile Worker

Integrated Maintenance



- Unique identification of assets, equipment, and material
- Access to any kind of information
- Data consolidation / red lining
- Work Orders
- Digital 4-eye check

Loop Check



- Unique identification of assets, equipment, and material
- Access to any kind of information
- Data consolidation / red lining
- Commissioning - Loop Check
- Digital 4-eye check

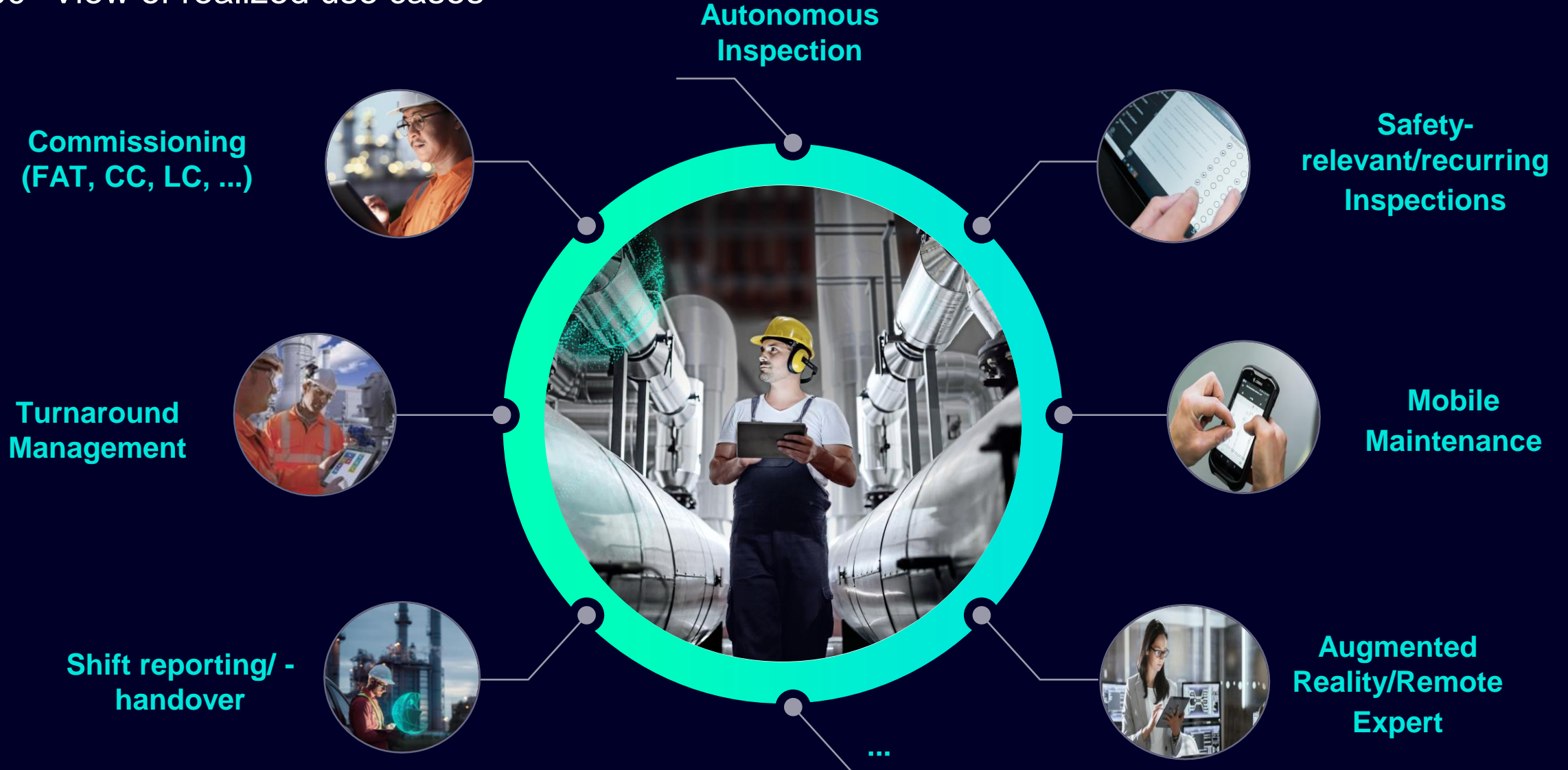
Inspection Tours



- Unique identification of assets, equipment, and material
- Report any kind of finding
- Digital 4-eye check
- (Safety) Inspection reporting done on the fly

COMOS Mobile Worker

360° View of realized use cases





P4711A

ADNOC Pump 4711A

0%



0 m away

OVERVIEW

2 children

35 properties

10 documents

REFRESH

DOWNLOAD

CREATE...

PHOTO

2 CHILDREN

01
Standard Maintenance PumpN0714
The pump is leaking

8 PRIORITY PROPERTIES

- Live Flow
- Live RPM
- Weblink
- ADNOC Pump 4711A Description
- Manufacturer
- Flow rate
- Nominal Power (electrical)

10 DOCUMENTS

5/13/2024
2:08:42 PM

Circuit Diagram



Datasheet



Inspection Report



Manual



P&ID



Pump 3D



Pump Explorer



Pump Holo



Terminal Strip

Offshore Maintenance, Inspection and Procedure Execution



O&G Operator (in Nordics):

Company:

Location: Nordics

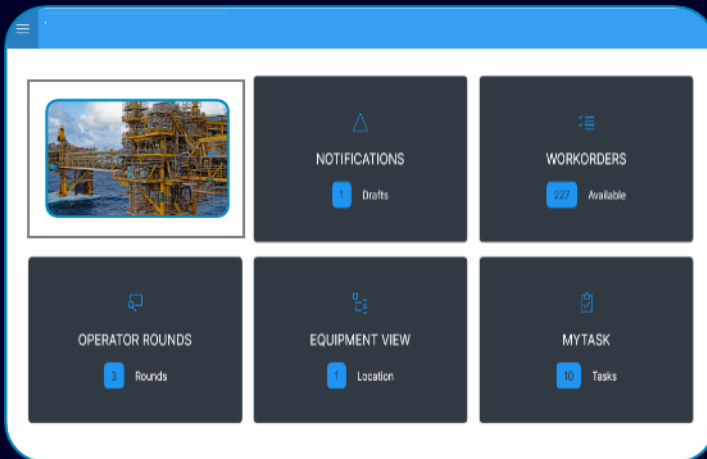
Revenue: EUR 200 Billion

Industry: Oil & Gas

Employee: 107.000

Use Case:

With the Redevelopment Project for the xyz Field in the north sea, customer is changing the paper-based work on all offshore sites to digital. Therefore, all maintenance orders and notifications are handled via mobile devices offshore, with SAP as master system in the background. For first-line maintenance, all operator rounds are managed with the Web-Client on Desktops and executed on tablets. Additionally, operating procedures are automatically translated from documents into intelligent mobile guidelines and can also be executed in the field.



General Conditions:

Volume: All offshore plants in Nordics

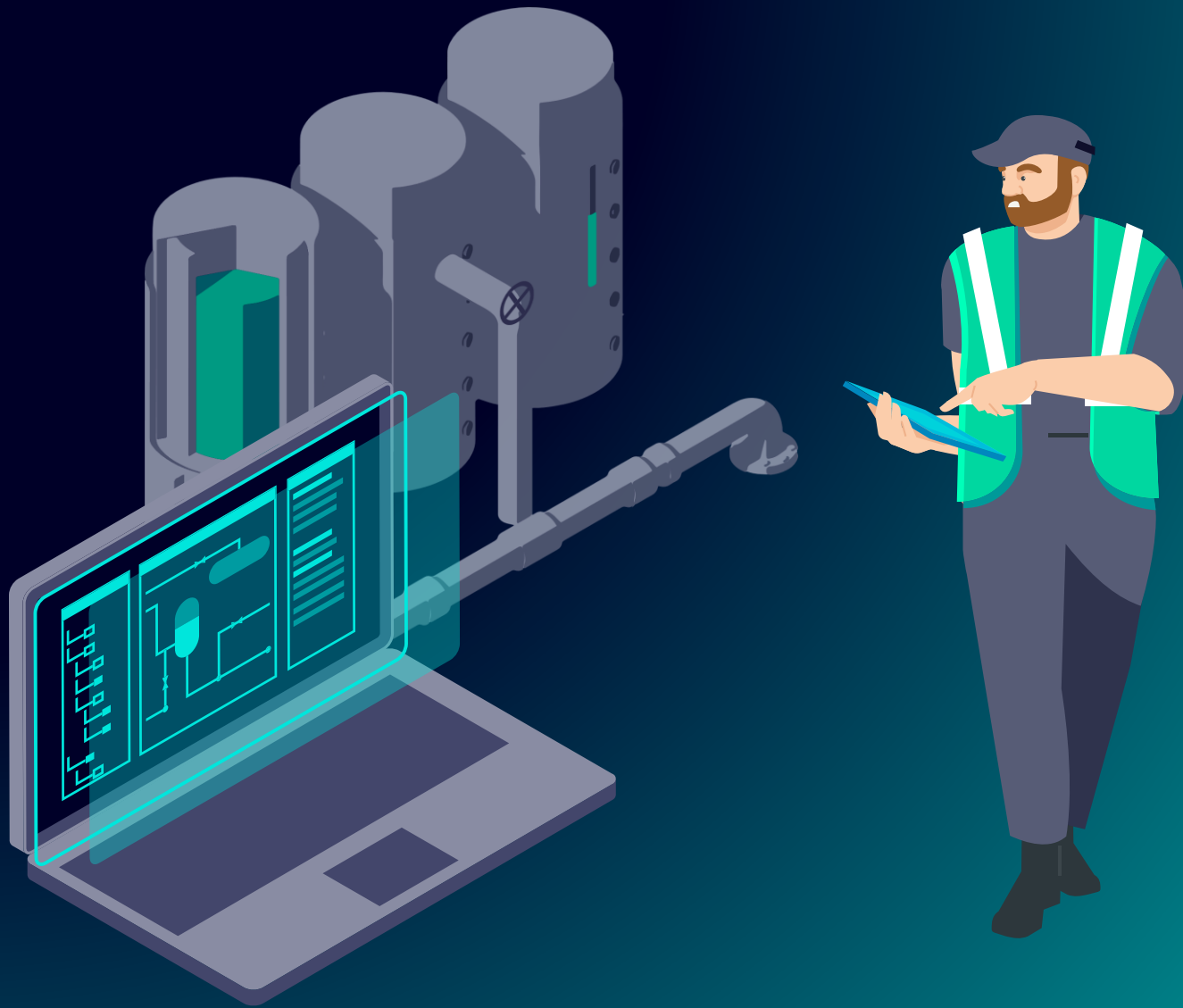
Interface: SAP (bi-directional) / EDMS (Quantum) / Osisoft PI (via OPC UA)

Device: Desktop and Tablets (iSafe-ATEX proof)

User: maintenance and operation

Relevant Requirements:

- Mobile maintenance incl. notifications
- Operator rounds and Tasks/Procedures
- Easy to use Mobile UI/UX
- Available for Win10, Android and iOS devices
- Digital Master system in background all times up to date (SAP, EDMS, ...)
- Online and Offline



Benefits

High flexibility

- Fast digitization of existing inspection lists
- Supporting various operating systems

Practical handling

- Only basic knowledge of MS Office required
- Minimal training for users required

Targeted functionalities

- Low costs and integration effort
- Use all features of mobile devices

Thank you

